

CLASSIC RUG COLLECTION

introduces



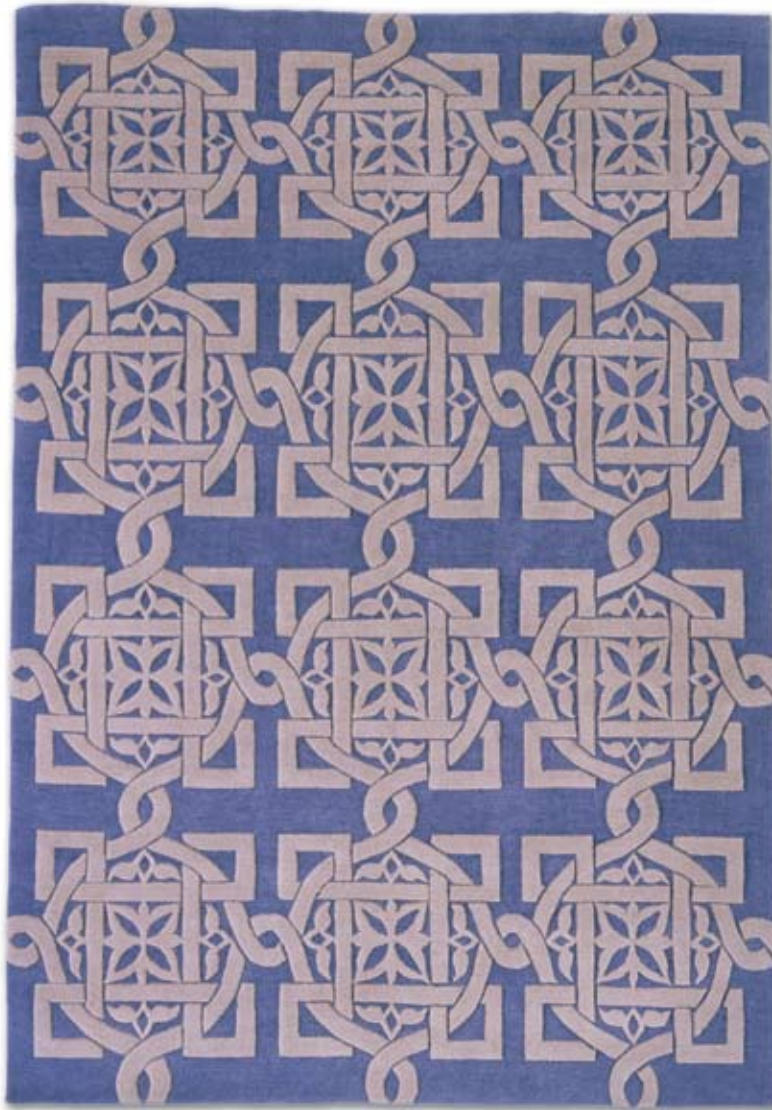
Ottoman

COLLECTION

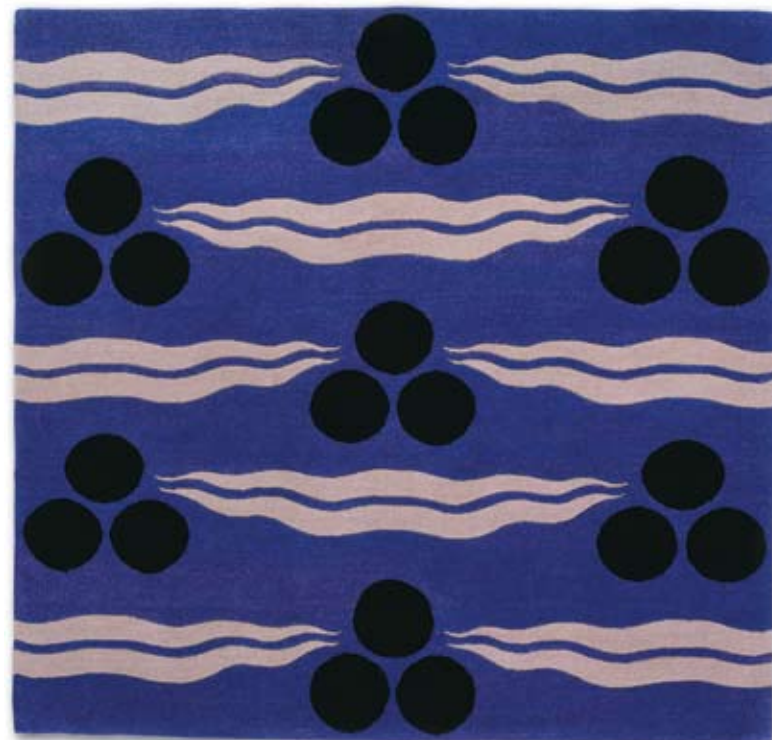
Outstanding Design. Highest Quality. The Ultimate in Personal Service.

Ottoman Collection

This collection was inspired by rug designer Barbara Barran's visits to Turkey and her love for Iznik pottery — brightly colored ceramics produced in Turkey during the 17th Century. Chrysanthemum and Tulips evince traditional Iznik designs, while Garden is a modern take on the classics. The rugs range from 80–300 knots per square inch, and the fibers include wool, silk, hemp, and nettle. All of the patterns are available in a variety of knot counts and fibers, so that we can create the rug that is right for you. All the rugs are hand-knotted in Nepal at a GoodWeave factory (no child labor).



1



2



3



4



5

1
"BLOCK PRINT"

150 knot hand-knotted wool. Low cut-pile field with raised cut-pile elements. Based on a 17th Century wood cut.

2
"TURKISH SQUARE"

80 knot hand-knotted wool. All cut pile with carved elements. Based on a traditional Turkish design.

3
"SHIELD"

100 knot hand-knotted cut-pile wool field with raised cut-pile silk elements. Based on a traditional Turkish design.

4
"LATTICE"

100 knot hand-knotted nettle & silk. All cut pile. Based on a design by Viollet-le-Duc.

5
"MOSAIC"

100 knot hand-knotted bleached & vegetal-dyed hemp. Based on a traditional mosaic design.



6



8



7

6

“IZNIK CHRYSANTHEMUM”

300 knot hand-knotted cut silk. Based on Iznik tiles in the Rustem Pasha Mosque in Istanbul.

7

“IZNIK TULIPS”

300 knot hand-knotted cut silk. Based on an Iznik tile design in the Rustem Pasha Mosque in Istanbul.

8

“IZNIK GARDEN”

200 knot cut silk. Based on an exploded section of an Iznik tile. (front cover)

CLASSIC RUG
collection inc

205 East 60th Street • New York, NY 10022
212-832-3338 tel • 888-334-0063 toll-free
info@classicrug.com • www.classicrug.com